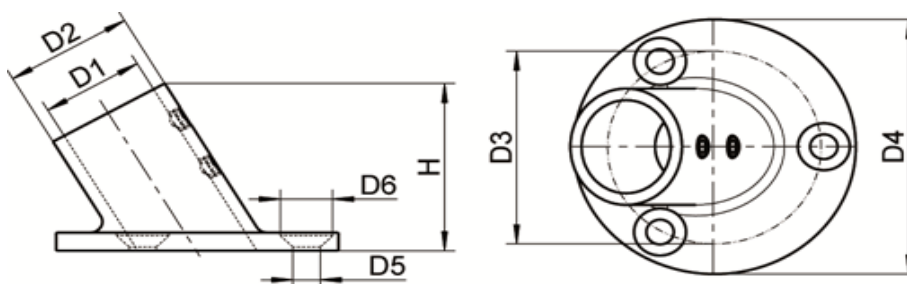

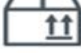


ART. M8202

Basi corrimano e pulpito tonde 60°, microfusione, lucide aisi 316 / A4

Boat handrail round Bases 60°, investment casting, polished aisi 316 / A4



Codice Articolo Item Number	D1 (mm)	D2 (mm)	D3 (mm)	D4 (mm)	D5 (mm)	D6 (mm)	H (mm)	 Box	 Master carton
M8202-4-22	22,5	29	50	66	5,3	10	43	10	30
M8202-4-25	25,6	32	53	70	6,3	11,5	46	10	40



Attenzione!!! Le dimensioni riportate nelle schede tecniche, possono subire variazioni minime da lotto a lotto e a seconda della produzione.

In particolare, non praticare i fori prima di ricevere il prodotto.

Pay attention!! The dimensions shown in the data sheets are subject to minimal variations (different production line batch).

In particular, do not drill the holes before receiving the product.